

---

---

## How to set up your broadband router for Internet

---

---

**Before you start, please print or save this Howto to your harddrive. That way it will be available even if your connection is down**

---

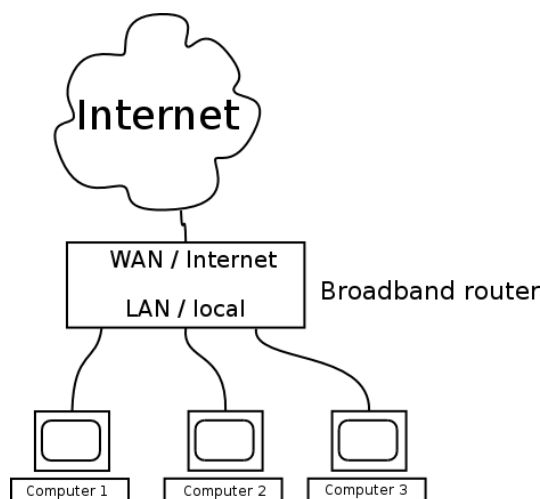
---

Because there are many different makes and models of broadband routers this guide will only describe a general setup. For more specific information on how to set up your broadband router, please refer to your manual.

---

---

### How to connect the cables



You should connect a straight TP network cable between the network socket in your apartment and the “WAN” or “Internet port” on the broadband router. Your computers should then be connected to the “LAN” or “Local ports” on the broadband router.

---

---

### How to configure the broadband router

Your broadband router’s WAN and LAN Internet port should be configured to use DHCP or dynamic assignment of IP addresses. Please refer to your manual for exact instructions how to configure this.

---

---

### How to configure the computers

Your computers should be configured to obtain IP address and DNS server address automatically. See instruction for your operating system below.